

Zuigelingen/Neonatologie

# Instructions for the administration of the Rotarix vaccine (Engelse vertaling)

The hospital where your son or daughter is being treated has given you a second dose of the Rotarix vaccine that you yourself are to administer to your child. This form contains important information on how to store and administer the vaccine.

## Storage

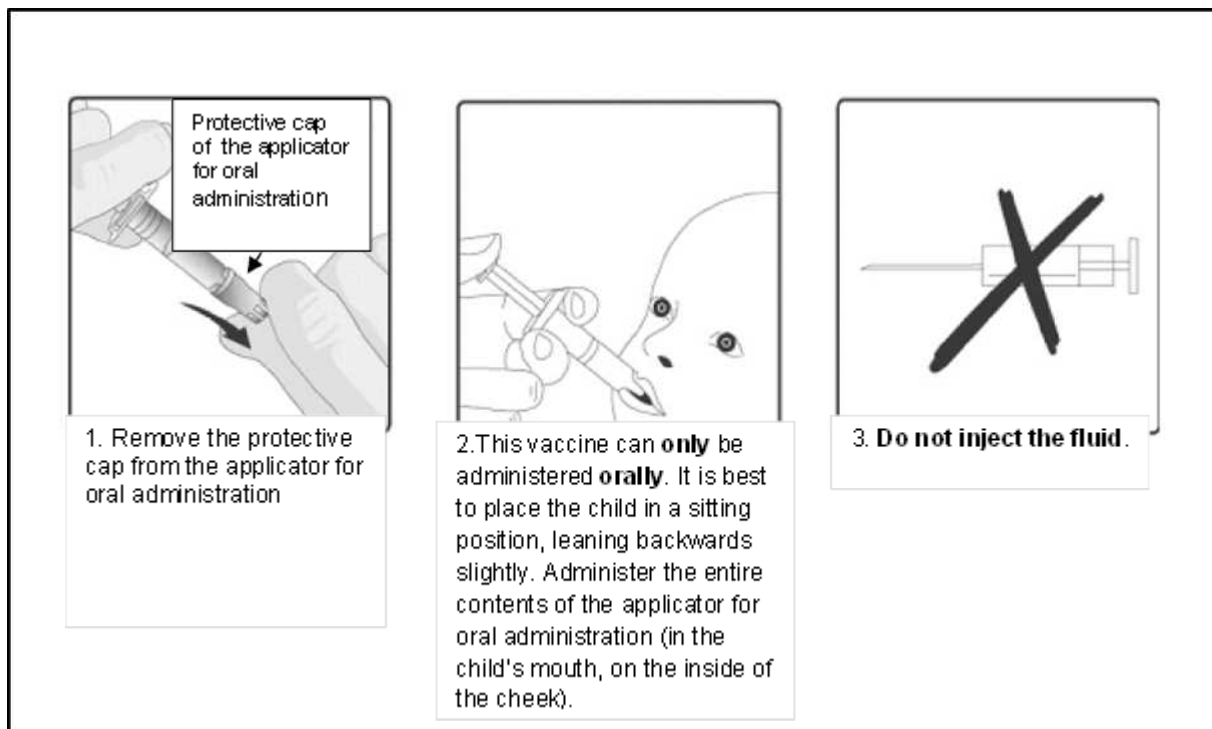
The Rotarix vaccine should be stored under refrigeration at a temperature between 2 and 8 degrees Celsius. For the transport of the vaccine from the hospital, you have been given a cooling element. After returning home, place the vaccine in the refrigerator as soon as possible and keep it there until you are going to administer the vaccine to your child.

## Administering the vaccine

Preferably, you should administer the second dose of Rotarix when your child is about 4 months old. We advise you to administer the Rotarix vaccine on the day that your child receives the second or third round of vaccinations at the well-baby clinic. It can be given on the same day as the hexavalent vaccine (vaccine against polio, diphtheria, tetanus, pertussis, Haemophilus influenzae B and hepatitis B) and the pneumococcal vaccine.

Whatever time you choose, it is important that the second dose of Rotarix vaccine is administered at least 4 weeks after the first dose and no later than 24 weeks after birth.

The Rotarix vaccine is given in the mouth. You administer the vaccine in the following manner:



The vaccine is ready for use. The vaccine is to be administered without mixing it with other solutions or fluids.

When you have given the vaccine, record this on the Rotarix vaccination card. The Rotarix applicator has a sticker with the lot number/batch number of the vaccine. Take this sticker off the applicator and paste it on the Rotarix vaccination card. Keep the Rotarix vaccination card with your child's growth booklet.

### Pay particular attention to the following:

If your child spits up most of the vaccine, please contact your child's consulting physician or paediatrician. It may be necessary to administer a replacement dose of vaccine.

Your child may be fed normally both before and after administration of the vaccine. Breast-feeding does not have any effect on the efficacy of the vaccine.

### Reporting adverse side-effects

if you suspect an adverse side-effect, please report this to the LAREB. This can be done via:

<https://www.lareb.nl/Meld-bijwerking/Meldformulier.aspx>

Please mention that this concerns the rotavirus vaccination in the context of the RIVAR-project.

The suspicion of any side-effects should also be reported to the RIVAR-project team via:

Email: [rivar@umcutrecht.nl](mailto:rivar@umcutrecht.nl) or by telephone: 06- 50124901